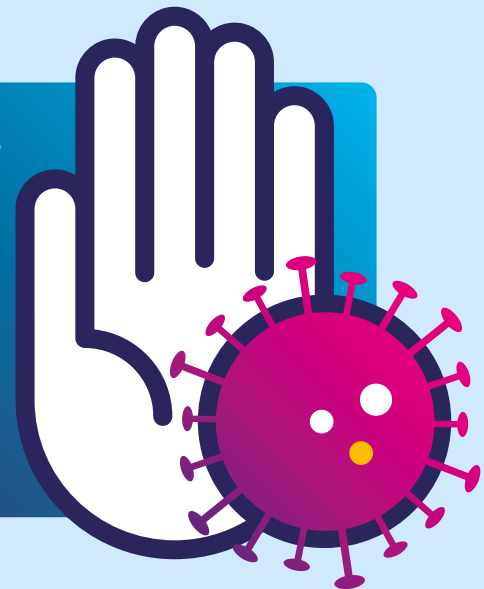


ABERDEEN CITY COVID-19 OUTBREAK CONTROL PLAN FOR SCHOOLS



WHAT IS CORONAVIRUS?

Coronavirus disease (COVID-19) is a disease that has spread to almost every country in the world.

WHAT IS THE OUTBREAK CONTROL PLAN?

This Outbreak Control Plan lets you know how organisations like NHS Grampian and Aberdeen City Council are working together to help protect you and others from the virus.



WHY DO ORGANISATIONS HAVE TO WORK TOGETHER ON THIS?

It's really important that organisations work together to help make sure that the buildings you visit like schools, shops and health centres are safe. No one organisation has all the best ideas. Staff in schools generally know how best to support you but Health professionals know about how Coronavirus spreads, so we need to work together.

WHAT HAS HAPPENED IN MY SCHOOL?

You'll have noticed that school feels a bit different at the moment.

To make things safer we have:

- Arranged for schools to be cleaned more often
- Made sure we all know about 'FACTS'
- Limited the number of children in one space at a time
- Encouraged staff to use outdoor spaces more often
- Changed how classrooms are set up
- Reduced the number of adults coming in and out of schools
- Planned how to support children and young people who feel anxious and worried



We will look carefully at how things are going over the next few weeks and make any changes we think will make things better. Please speak to an adult in your school if you have any ideas about how to make things better for you and other pupils in your school.



SO WHAT DO THESE ORGANISATIONS DO TO HELP ME?

The Public Health team in NHS Grampian and the Council work together to make sure you know how to keep yourself and others safe by staying at home if you have a cough, can't taste or smell or if you have a high temperature.

WHAT ELSE ARE THE ORGANISATIONS DOING TO HELP?

There are lots of important things that need to be done at the moment and NHS Grampian, the Council and others are sharing these responsibilities.

Together we are:

- Looking at how the virus is spreading by looking at lots of data so that we can tell everyone how to stay safe
- Working together to help groups of people who have the virus recover
- Making sure that Care Homes and schools know how to keep people living in Care Homes, pupils and staff safe
- Making sure that workplaces and businesses know how to keep people safe
- Running 'Test and Protect' to make sure that people who have been in contact with those with the virus are safe
- Working together to support people who may need some additional help just now

WHAT WILL HAPPEN IF FRIENDS AND STAFF ARE UNWELL IN MY SCHOOL?

Anyone who is unwell will go home straight away. Your school is keeping a record of all children, young people and staff who are unwell. The Council and NHS Grampian will monitor this information and the number of COVID-19 cases across the City. The NHS will let people know if they need to self-isolate but it's really important not to attend school if you are showing symptoms of COVID-19.

If there are two cases of COVID-19 in a school or any changes in the number of children attending school, the Head Teacher will contact Public Health in NHS Grampian. It may be necessary to close schools on occasion to keep everyone safe. NHS Grampian will help us by telling us if we need to do this.

Don't worry though, if that does happen then your teachers will keep supporting and helping you by using Google Classroom.

WHAT SHOULD I DO IF I HAVE ANY QUESTIONS ABOUT COVID-19?

Speak to an adult in your school and they will help answer your questions. If they don't know the answer they will check with someone in NHS Grampian.



Remember

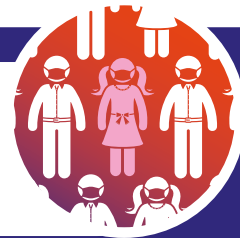
FACTS

for a safer Scotland

F **FACE** coverings



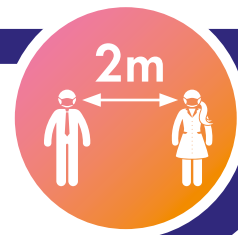
A **AVOID** crowded places



C **CLEAN** your hands regularly



T **TWO METRE** distance



S **SELF ISOLATE** and book a test if you have symptoms

